

NETTERM PRINTING MANUAL

you can download NETTERM software at: <http://www.securenetterm.com/>

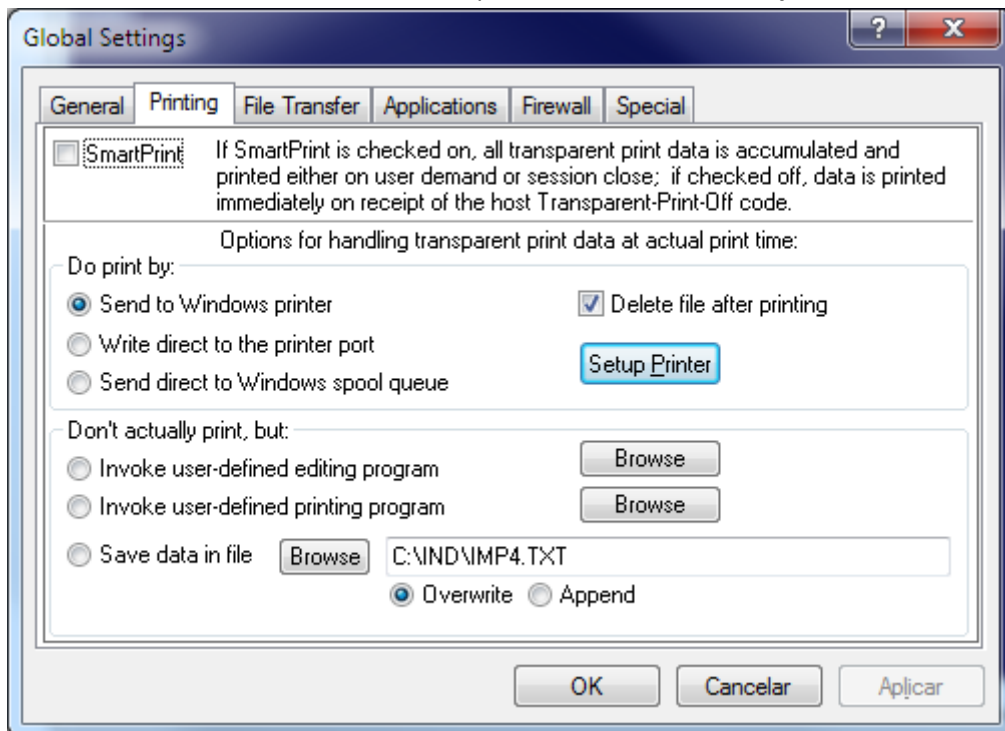
1) Command to send a print job. (slave printer)

```
W $(27,91,53,105) W "Hello Printer",!,?15,"PPPPP",$(12),"PAG. 2" W
$(27,91,52,105)
```

2) NET TERM Configuration

2.1) Sending to Windows Printer

- On the top menu choose **Options, Setup, Global Settings**
- Choose the tab **Printer** and select the option “Send to Windows printer”

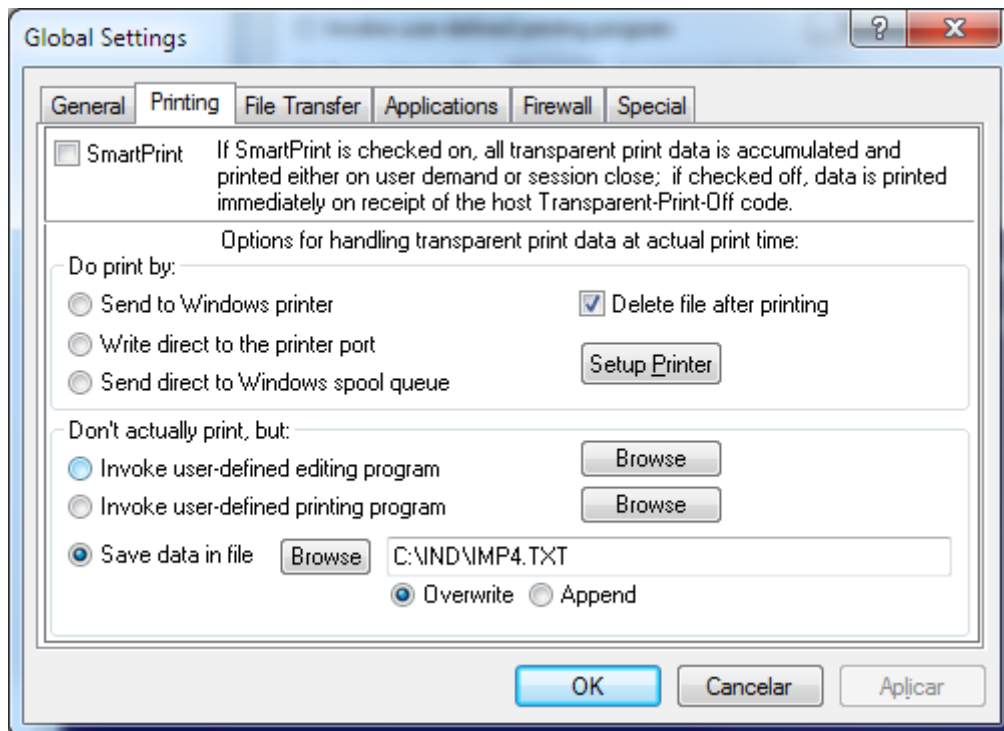


This option will send your print command to the windows printer.

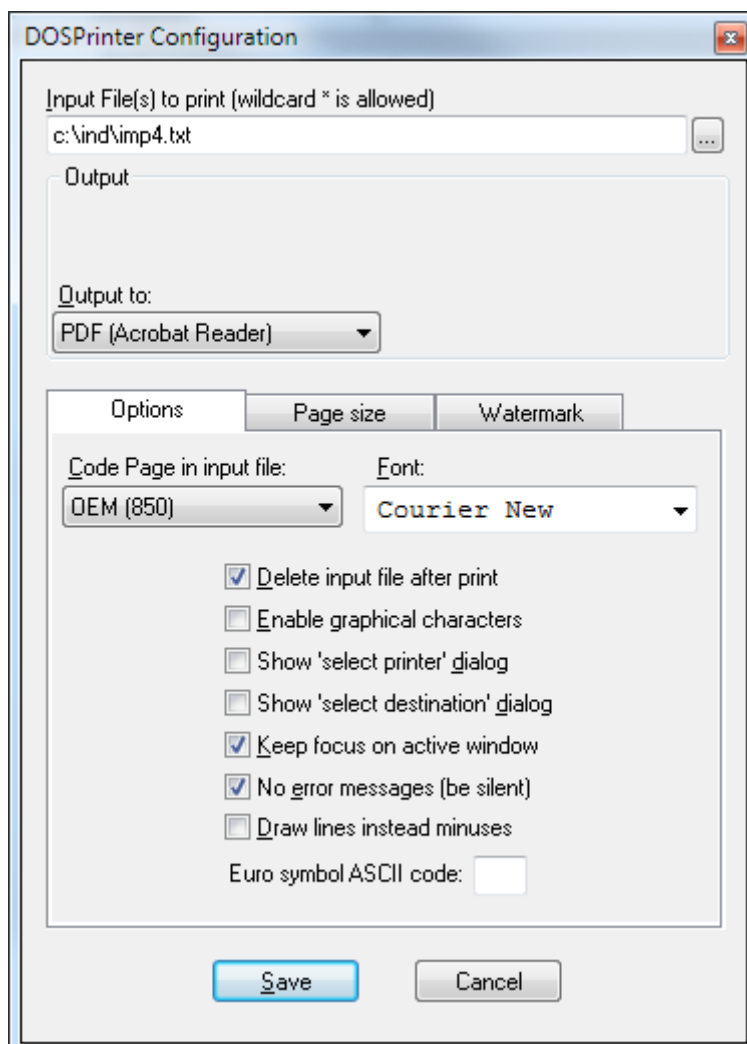
2.2) Saving in TXT file, and Printing using DOSPrinter

DOSPrinter software will allow you to print in PDF, use images, barcode, watermark, especial graphical characters, open a printer dialog (to choose which printer you want to print) and many others. Check all features and download at: <http://dosprinter.net/>

- On the top menu choose **Options, Setup, Global Settings**
- Choose **Save data in file**, and click on **Browse**, to define the file location.



DOSPrinter will check if the file exists, and when it detects a file, it will print as you define.



Jonas Machado, and Gustavo Pedro.